

## NOT ALL COURSES ARE CREATED EQUAL

The IT industry is growing rapidly. You recognize the need for a career change or to increase your current skills. How do you find a training center that has spent extravagant amounts of time and money to ensure that their facilities and instructors are the best there is? If you examine each institution carefully, by following the "Checklist for Success" below, you will discover the computer training center that can best help you meet your career goals.



## WE ARE COMMITED TO SUCCESS

CIT supports the success of all it's students. If for any reason a student does not pass any one of their certification exams, they may repeat the course FREE OF CHARGE, on a space available basis, as many times as is needed.

Welcome to:  
**College of Information  
Technology**



**Toll Free**  
**877.329.5100**

2701 East Chapman Avenue, Suite 101  
Fullerton, California 92831-3703  
Tel: 714.879.5100 Fax: 714.879.2272

Visit us on the Web

**[www.collegeofit.com](http://www.collegeofit.com)**

## LOCATION

Located at the northwest intersection of Chapman Avenue and the Orange Freeway (57) in Fullerton; there is plenty of free, well-lit parking behind both buildings. Orange County Rapid Transit stops at the curb in front of our campus.

**College of  
Information Technology**



06  
05  
04  
03  
02  
01





## STUDENT BODY

At *College of Information Technology* the emphasis is on the student. Our courses are geared to prepare students for entry level position in high-tech careers.

Our student population is comprised of:

- ☑ Persons starting a career in the computer technology industry
- ☑ Individuals who need to maintain an industry recognized certification.
- ☑ Students wanting to enhance their current understanding of the multifaceted realm of computers

## CIT COURSES OFFERED

- NETWORK ADMINISTRATION
- DATABASE DEVELOPMENT
- OFFICE APPLICATIONS
- PROGRAMMING/DEVELOPERS
- CISCO
- A+ COMP TIA
- MICROSOFT
- ORACLE 8i/9i
- Linux

- HARDWARE SERVICING
- INTERNET SITE DEVELOPMENT
- CUSTOMIZED CLASSES



## APPROVALS

We are approved by the BPPVE (Bureau for Private Postsecondary and Vocational Education), Veterans Administration, I-20 students Visa, WIA(I-Train, ETPL) and Vocational Rehabilitation for State of California and the Private Sector.

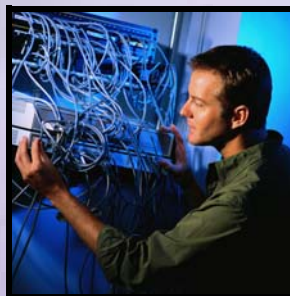
## JOB PLACEMENT ASSISTANCE

*College of Information Technology* is the evolution of The Engineers Group, Inc., which has been training individuals and assisting personnel in the information technology industry since it's inception. Some of the employers utilizing the services of the Colleges' Placement Department include:

- L.A. County
- Nextengine, Inc.
- Pac Bell
- Williams O'Neil Co., Inc.
- Phillips Petroleum
- Orange Co. Credit Union

## INDUSTRY CURRENT FACILITY

- ☑ We promote a productive and enjoyable training experience.
- ☑ We have met or exceeded strict Microsoft, Oracle and Cisco standards for facilities, hardware, quality-control and customer satisfaction.
- ☑ The college is equipped with Gateway computers (Pentiums III and IV) and color monitors.
- ☑ The campus is comprised of spacious classrooms featuring ergonomically designed furniture.
- ☑ The ratio of students to equipment is 1:1 with each student learning on their own computer.
- ☑ Each classroom has an overhead projection system enabling the Instructor to project his computer screen output to the 50" display screen at 1500 Lumens.



## INSTRUCTORS ARE INDUSTRY PROS

All Instructors are industry certified as well as certified by the State of California.

Our Instructors possess a combination of industry recognized certifications, plus many years of teaching experience and practical application of the class subject matter.

## STUDENT SERVICES

*College of Information Technology* strives to support our students' educational pursuits by providing various resources.

Labs available during regular business hours.

High-speed Internet access.

Customized "Job Search" campaign.

VUE and Sylvan Prometric testing is available on campus.

## SCHOOL HOURS

MORNING CLASSES	9 am to 1 pm
AFTERNOON CLASSES	1 pm to 5 pm
EVENING CLASSES	6 pm to 10 pm
WEEKEND CLASSES	9 am to 5 pm

### CUSTOMIZED CLASSES

scheduled to accommodate "your" needs.

## TUITION

- Corporate and Vocational rehabilitation accommodations.
- Prices include all materials and books.
- Classes are held at the CIT campus, or on-site to accommodate a client's specific training needs.
- In school tuition payment plan.
- Many private student's loan options are available for qualifying students.